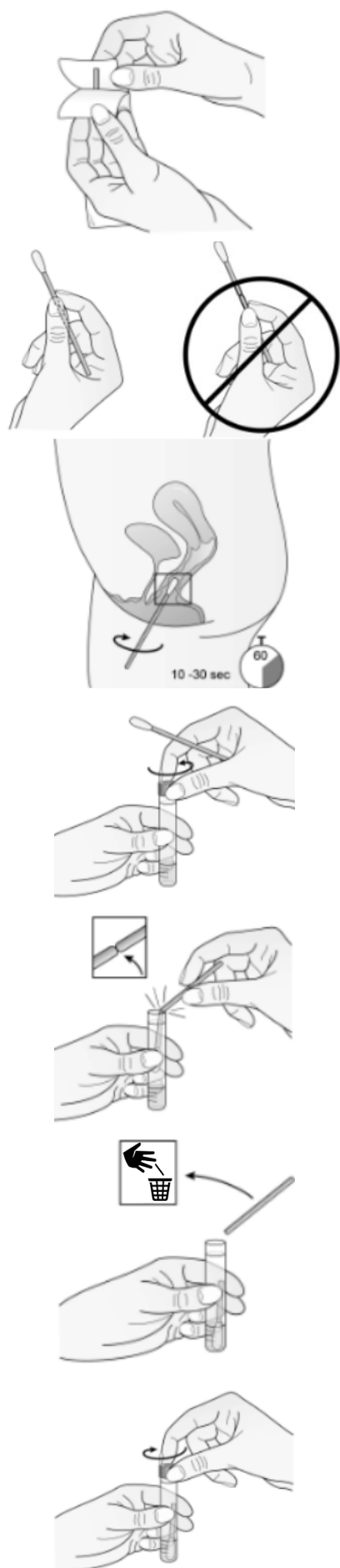


## Patient Collection Instructions for Vaginal Self-Swab Specimen

### Before you start:

- Once in a hospital gown, thoroughly wash your hands with soap and water. Dry hands with a clean paper towel.
- Make sure you are in a comfortable position and able to maintain balance during the collection process.
- Do not touch the soft tip of the swab or lay the swab down, if this happens or the liquid in the tube spills, ask for a new swab or kit from your health-care provider.

### Instructions:



1. Partially peel open the swab package, exposing the plastic stick end of the swab.
2. Remove the swab from the package. **IMPORTANT:** Do not touch the soft tip of the swab or lay the swab down. If this happens ask for a new swab.
3. Hold the swab in the middle of the stick with your thumb and index finger, making sure to cover the score line (black line). Do not hold the swab below the score line (black line).
4. Spread the opening to your vagina with your non-dominant hand so that you can feel the opening to your vagina.
6. Carefully insert the soft tip end of the swab into your vagina about 2 inches. Gently rotate the swab for 15-20 seconds, making sure the swab touches ALL the walls of the vagina so that moisture is absorbed by the swab.
8. Remove the swab without letting it touch your skin. Do not set the swab down or touch the tip of the swab.
9. Immediately place the swab into the transport tube or give the swab to the healthcare professional that may be helping you.
  - a. Unscrew the tube top.
  - b. Place the swab, soft tip side down into the tube.
  - c. Once the swab is in the tube, carefully break the swab shaft at the score line (black line).
  - d. Discard the broken plastic piece into the trash.
  - e. Tightly screw the cap onto the transport tube.
10. Once the tube has been sealed, wash hands and get dressed. Hand tube to your healthcare professional. Make sure it is labeled with your name and date of birth.

*Self-collection must take place in a healthcare setting and is not approved for at-home collection.*

*Test results will be sent to your healthcare provider.*